

• Dreaming of a debt-free future? •

- ERASE YOUR STUDENT DEBT -

Student Debt Relief Clinic

Lower Your Payments and Enroll in Public Service Loan Forgiveness Today!

Are you a student or a public employee with Federal Student loans? Join us for a Student Debt Relief workshop and learn how to get on track to eliminate your student debt. This is a free event; however, space is limited and registration is required. Light refreshments will be provided.

Saturday, August 20, 2016

9:30 a.m. – 10:00 a.m. Registration
10:00 a.m. – 12:00 p.m. Program

WHEN:

SUNY College of Environmental Science and

Forestry (ESF)

Nifkin Lounge

(Located in the basement of Marshall Hall)

1 Forestry Drive

Syracuse, NY 13210

(see map on the back)

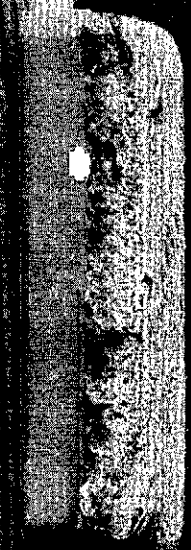
WHERE:

To register: <http://goo.gl/forms/HTUPIT3ZTJ5NinZs1>
or contact

Mildred Garcia at 518-257-1411 or mildred.garcia@cseainc.org

Brought to you by:

AFSCME 



Parking and Accessibility Map

University Police 470-6667
 Please Note: The campus is built on a grade.
 Call for wheelchair route planning.

Recommended handicapped parking lots:
 If you visit:
 Use Lot#: P20
 Baker Laboratory P1 or P12
 Gateway Center P7 or P8
 Illick Hall P9
 Jahn Laboratory P20
 Maintenance P20
 Marshall Hall P8
 Moon Library P3, P4 or P9
 Walters Hall P1 or P12

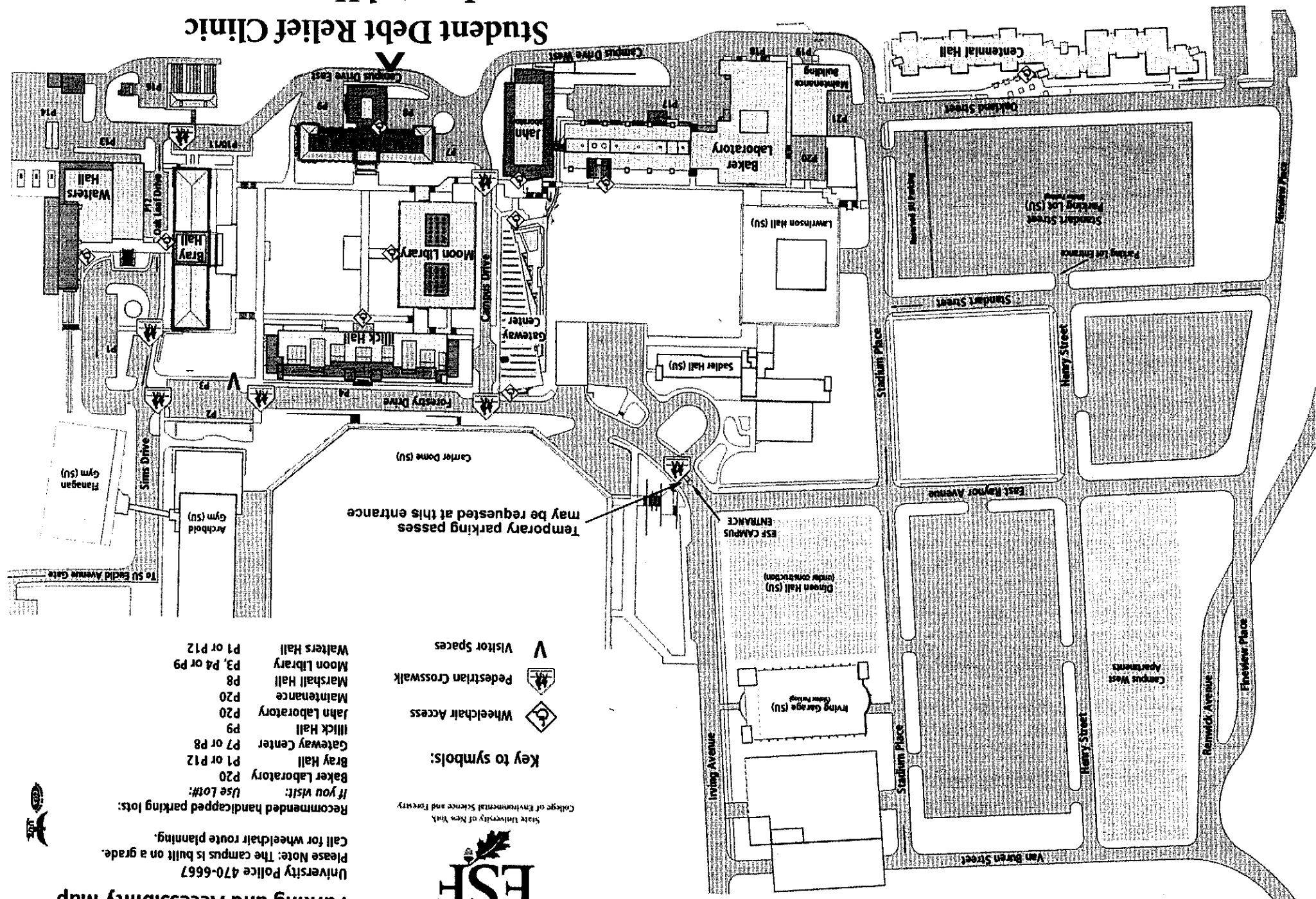


State University of New York
 College of Environmental Science and Forestry

Key to symbols:

- Wheelchair Access
- Pedestrian Crosswalk
- Visitor Spaces

Temporary parking passes may be requested at this entrance



Student Debt Relief Clinic

Located Here

Please use lots P7, P8 & P9

